

precision. nothing less.



ilis gmbh

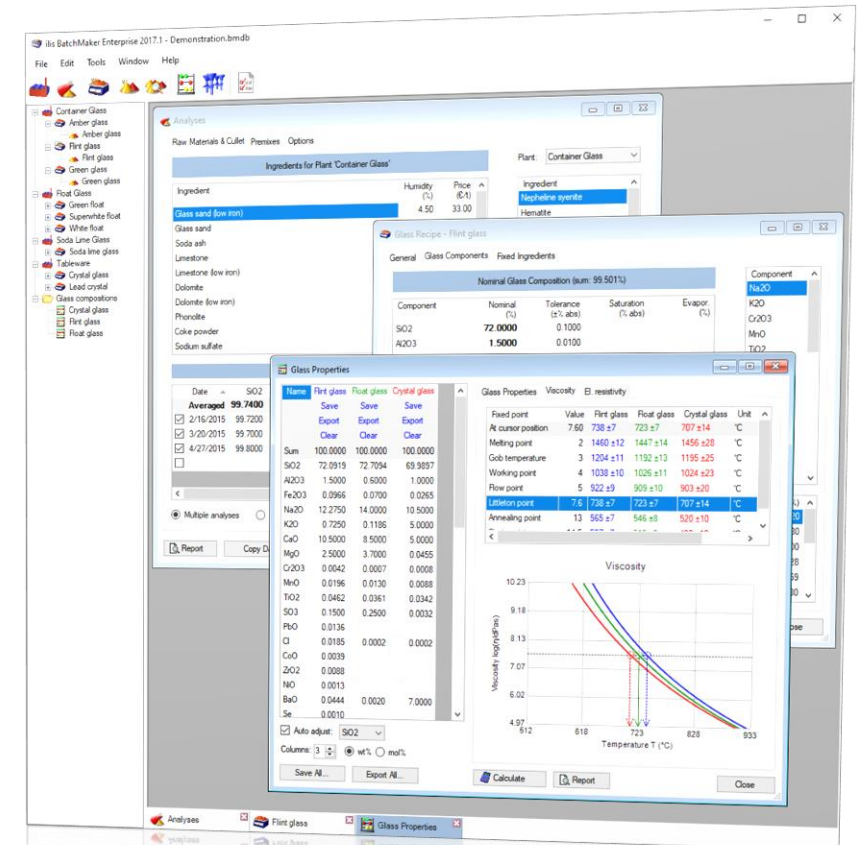
- Founded 1998, based in Erlangen, Germany
- Competencies
stress measurement, color measurement, batch calculation
- Target markets
glass industry, optics & photonics, automotive, aerospace, pharma
- Applications
container glass, flat glass, tableware, tube and laboratory glass, pharmaceutical packaging, optical materials and components, transparent plastics
- Products and brands
BatchMaker[®], Chroma[™], StrainMatic[®], StrainScope[®], StrainScanner[®], StrainCam[®]



BatchMaker®

batch calculation and glass development

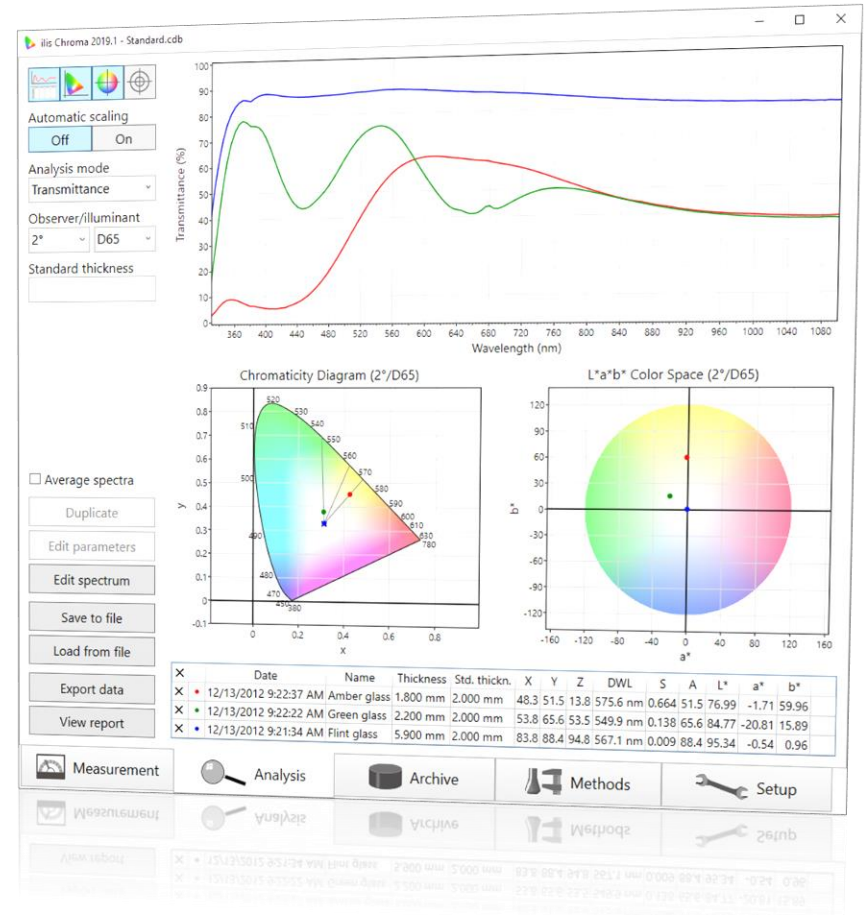
- Easy and fast calculation and correction of batch recipes for glass production
- Convenient management and editing of chemical components, raw materials and analyses
- Calculation of major batch and glass properties
- Configurable reports, integrated raw material usage and glass property calculator
- Modern user interface with integrated database



Chroma™

color measurement (not only) for the glass industry

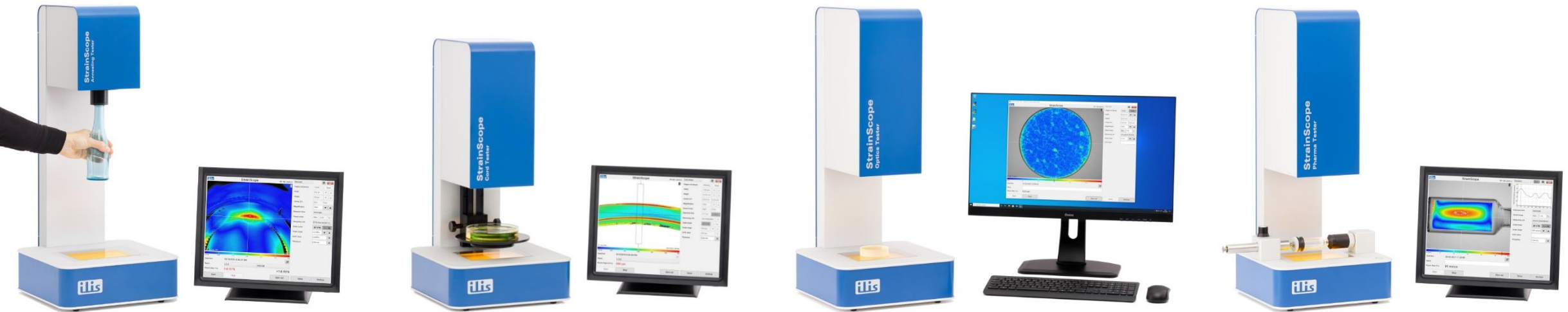
- Chromaticity/Helmholtz values, CIELAB, etc. (according to ISO 11664/CIE 15)
- Architectural and automotive glazing parameters (according to EN 410/ISO 9050 and ISO 13837)
- Spectral redox determination ($\text{Fe}^{2+}/\text{Fe}^{3+}$ ratio)
- Simulation of the color effect of oxide-colored glasses
- Customer-specific calculations
- Integrated data management and trend analysis
- Direct control of many spectrometer models
- Workflow-based user interface



StrainScope®

imaging measurement of residual stresses in real time

- Accurate and reproducible measurement of the stress distribution in real time
- Various variants, specially adapted to the respective measurement task



StrainScope® Annealing Tester

Residual stresses in container glass and tableware

StrainScope® Cord Tester

Cord stresses in container glass

StrainScope® Optics Tester

Stress birefringence in optical materials and components

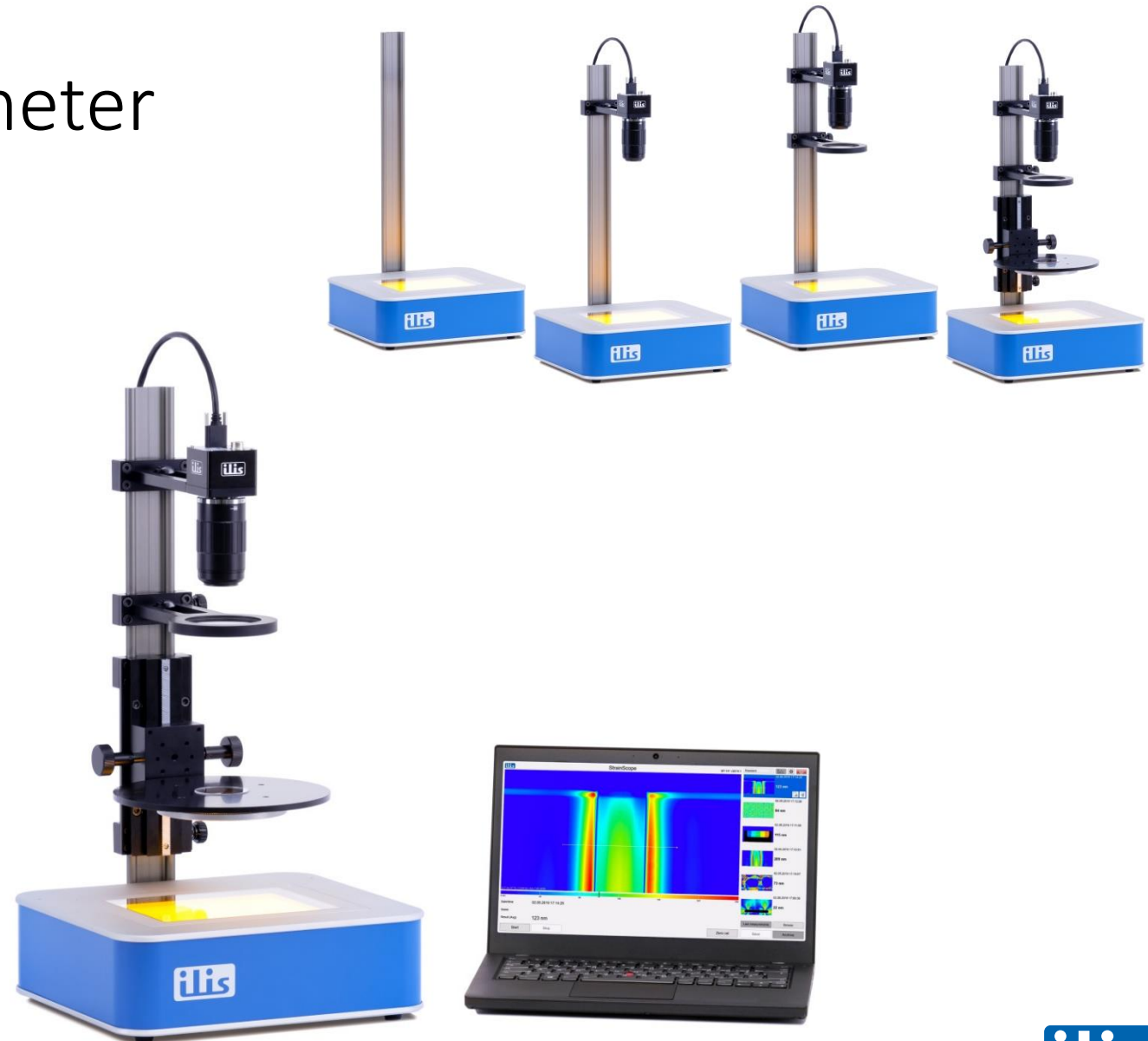
StrainScope® Pharma Tester

Residual stresses in pharmaceutical packaging (syringes, vials, ampoules)

StrainScope[®] Flex

modular real time polarimeter

- Flexible and compact design
- Versatile solution for varying measuring tasks in research, development and process automation
- Fully compatible with the proven StrainScope software
- Powerful StrainCam[®] SDK (Software Development Kit) for seamless integration into your own applications



StrainScanner®

imaging inline polarimeters for process control

- Inline measurement of flat glass (architectural glass, display glass, etc.) and technical polymer films

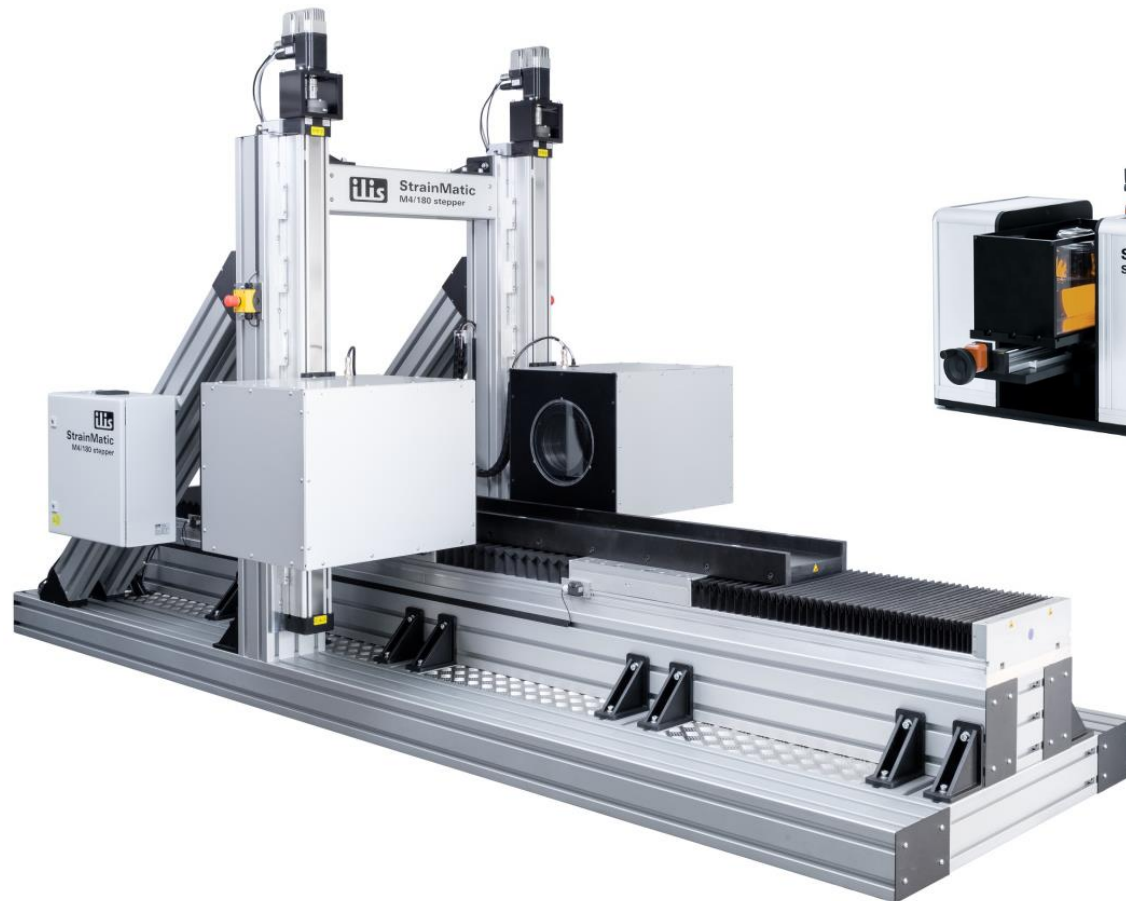


- 100% production monitoring or for spot checking
- Application-specific and customized solutions



Special Solutions

customized solutions for special measuring tasks



ilis academy

seminars and workshops

- Practice-oriented seminars and workshops in small groups on the topics of stress measurement, color measurement and batch calculation



Customers all over the World



What can we do for you?



ilis gmbh

Henkestr. 91
91052 Erlangen
Germany

+49 9131 9747790
info@ilis.de
www.ilis.de

